

MONTCLAIR STATE

UNIVERSITY

2012 RETENTION AND GRADUATION REPORT

Office of Institutional Research

June 2012

**TABLE 1: RETENTION AND GRADUATION RATES FOR FULL-TIME, FIRST TIME UNDERGRADUATE COHORTS
FALL 2001 TO FALL 2010 [1]**

YEAR COHORT ENTERED	NUMBER IN ENTERING COHORT [3]	RETENTION RATES			RETENTION & CUMULATIVE GRADUATION RATES [2]					
		PERCENT RETAINED TO SECOND YEAR	PERCENT RETAINED TO THIRD YEAR	PERCENT RETAINED TO FOURTH YEAR	PERCENT GRADUATED 4 YEARS	PERCENT RETAINED TO 5TH YEAR	PERCENT GRADUATED 5 YEARS	PERCENT RETAINED TO 6TH YEAR	PERCENT GRADUATED 6 YEARS	PERCENT RETAINED TO 7TH YEAR
2001	1,378	85.0%	75.5%	70.9%	27.0%	41.7%	54.0%	13.6%	61.2%	5.6%
2002	1,470	81.9%	74.1%	69.1%	27.9%	39.1%	54.4%	11.2%	62.1%	3.9%
2003	1,594	84.9%	73.5%	68.1%	29.5%	37.8%	54.8%	11.4%	61.8%	4.3%
2004	1,737	82.4%	71.4%	67.5%	30.7%	36.4%	55.6%	10.3%	61.9%	4.1%
2005	1,868	81.3%	71.9%	68.1%	34.0%	33.7%	57.4%	8.6%	62.3%	3.1%
2006	2,018	81.6%	73.6%	70.0%	34.8%	33.3%	57.6%	9.2%		
2007 [4]	2,069	81.9%	73.7%	69.8%	34.4%	34.1%				
2008 [4]	2,257	83.0%	75.6%	70.6%						
2009 [4]	2,101	81.2%	73.3%							
2010 [4]	2,171	81.8%								
Means	1,866	82.5%	73.6%	69.3%	31.2%	36.6%	55.6%	10.7%	61.9%	4.2%

[1] Sources: SURE/IPEDS Enrollment, Degree, and SSN Change file submissions. Retention rates exclude degree earners.

[2] Graduation rates correspond to those reported on the IPEDS Graduation Rate Survey (GRS).

[3] This is the Revised IPEDS GRS Cohort number, with exclusions (death, permanent disability, military service, foreign service, & church mission service) removed.

[4] Beginning in 2007, IPEDS tracks all full-time, first-time students, including those who enter with enough credits to be classified as sophomores or above.

 = Our most recent retention and graduation rates.

**TABLE 2: RETENTION AND GRADUATION RATES FOR FULL-TIME, FIRST TIME FRESHMAN COHORTS
BY ADMISSIONS STATUS, FALL 2004 TO FALL 2010 [1]**

YEAR & ADMIT TYPE	NUMBER IN ENTERING COHORT	RETENTION RATES			RETENTION & CUMULATIVE GRADUATION RATES					
		PERCENT RETAINED TO SECOND YEAR	PERCENT RETAINED TO THIRD YEAR	PERCENT RETAINED TO FOURTH YEAR	PERCENT GRADUATED 4 YEARS	PERCENT RETAINED TO 5TH YEAR	PERCENT GRADUATED 5 YEARS	PERCENT RETAINED TO 6TH YEAR	PERCENT GRADUATED 6 YEARS	PERCENT RETAINED TO 7TH YEAR
2004	1,737	82.4%	71.4%	67.5%	30.7%	36.4%	55.6%	10.3%	61.9%	4.1%
Regular	1,487	82.9%	72.3%	68.7%	33.1%	35.5%	58.0%	9.5%	64.3%	3.6%
EOF	154	81.8%	68.2%	61.0%	20.1%	40.3%	44.2%	14.3%	51.9%	7.1%
Special	96	76.0%	62.5%	59.4%	11.5%	43.8%	35.4%	15.6%	41.7%	8.3%
2005	1,868	81.3%	71.9%	68.1%	34.0%	33.7%	57.4%	8.6%	62.3%	3.1%
Regular	1,612	81.7%	73.1%	69.1%	36.8%	32.1%	59.7%	7.6%	64.6%	2.5%
EOF	148	83.1%	69.6%	65.5%	19.6%	45.9%	44.6%	18.2%	52.7%	8.1%
Special	108	73.1%	58.3%	56.5%	12.0%	40.7%	39.8%	10.2%	41.7%	4.6%
2006	2,018	81.6%	73.6%	70.0%	34.8%	33.3%	57.7%	9.2%		
Regular	1,720	82.0%	74.8%	71.2%	37.0%	32.7%	56.0%	8.3%		
EOF	140	79.3%	63.6%	58.6%	19.3%	35.7%	47.1%	22.1%		
Special	158	79.7%	69.6%	67.1%	24.1%	38.6%	27.2%	7.6%		
2007 [2]	2,069	81.9%	73.7%	69.8%	34.4%	34.1%				
Regular	1,722	82.1%	73.9%	70.1%	35.8%	33.3%				
EOF	148	75.7%	66.9%	66.2%	16.9%	48.0%				
Special	199	84.4%	76.9%	70.4%	35.2%	30.7%				
2008 [2]	2,257	83.0%	75.6%	70.6%						
Regular	1,934	82.8%	75.7%	71.3%						
EOF	160	83.8%	73.1%	65.0%						
Special	163	84.7%	77.3%	68.1%						
2009 [2]	2,101	81.2%	73.3%							
Regular	1,819	81.1%	73.4%							
EOF	158	80.4%	70.9%							
Special	124	83.1%	74.2%							
2010 [2]	2,171	81.8%								
Regular	1,912	82.0%								
EOF	107	85.0%								
Special	152	77.0%								

[1] Sources: SURE/IPEDS Enrollment, Degree, and SSN Change file submissions. Retention rates exclude degree earners.

[2] Beginning in 2007, IPEDS tracks all full-time, first-time students, including those who enter with enough credits to be classified as sophomores or above.

CHART 1: GRADUATION RATES FOR COHORTS OF FULL-TIME, FIRST-TIME FRESHMEN

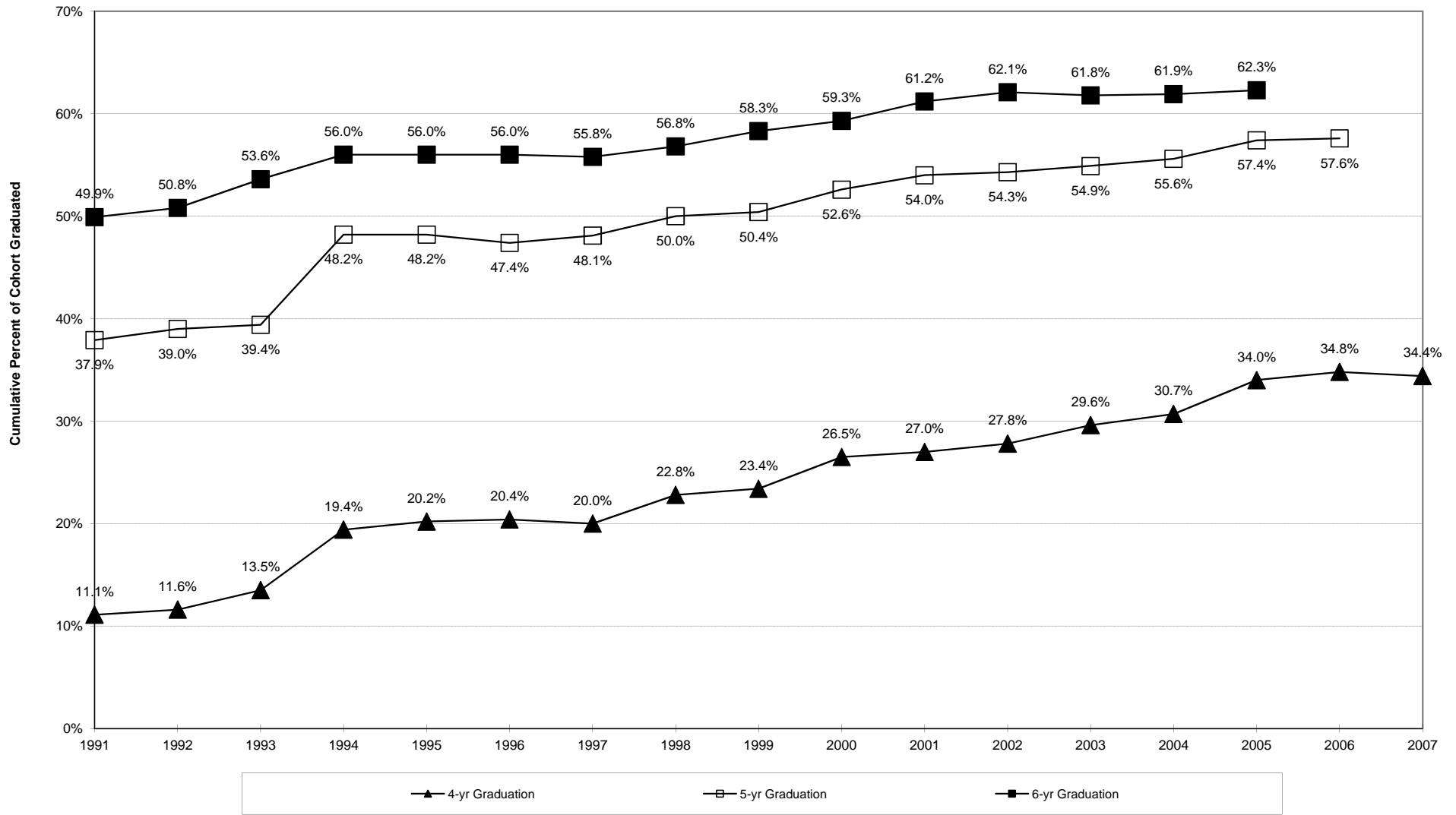


TABLE 6: LONG-TERM TRENDS IN GRADUATION RATES

Cohort	4-yr Graduation	5-yr Graduation	6-yr Graduation	Completed in Fifth Year	Completed in Sixth Year
1991	11.1%	37.9%	49.9%	26.8%	12.0%
1992	11.6%	39.0%	50.8%	27.4%	11.8%
1993	13.5%	39.4%	53.6%	25.9%	14.2%
1994	19.4%	48.2%	56.0%	28.8%	7.8%
1995	20.2%	48.2%	56.0%	28.0%	7.8%
1996	20.4%	47.4%	56.0%	27.0%	8.6%
1997	20.0%	48.1%	55.8%	28.1%	7.7%
1998	22.8%	50.0%	56.8%	27.2%	6.8%
1999	23.4%	50.4%	58.3%	27.0%	7.9%
2000	26.5%	52.6%	59.3%	26.1%	6.7%
2001	27.0%	54.0%	61.2%	27.0%	7.2%
2002	27.8%	54.3%	62.1%	26.5%	7.8%
2003	29.6%	54.9%	61.8%	25.3%	6.9%
2004	30.7%	55.6%	61.9%	24.9%	6.3%
2005	34.0%	57.4%	62.3%	23.4%	4.9%
2006	34.8%	57.6%		22.8%	
2007	34.4%				
Average	24.0%	49.7%	57.5%	26.6%	8.5%
Pct. Point Change	23.30	19.70	12.40	-4.00	-7.10

CHART 2: RETENTION RATES FOR COHORTS OF FULL-TIME, FIRST-TIME FRESHMEN

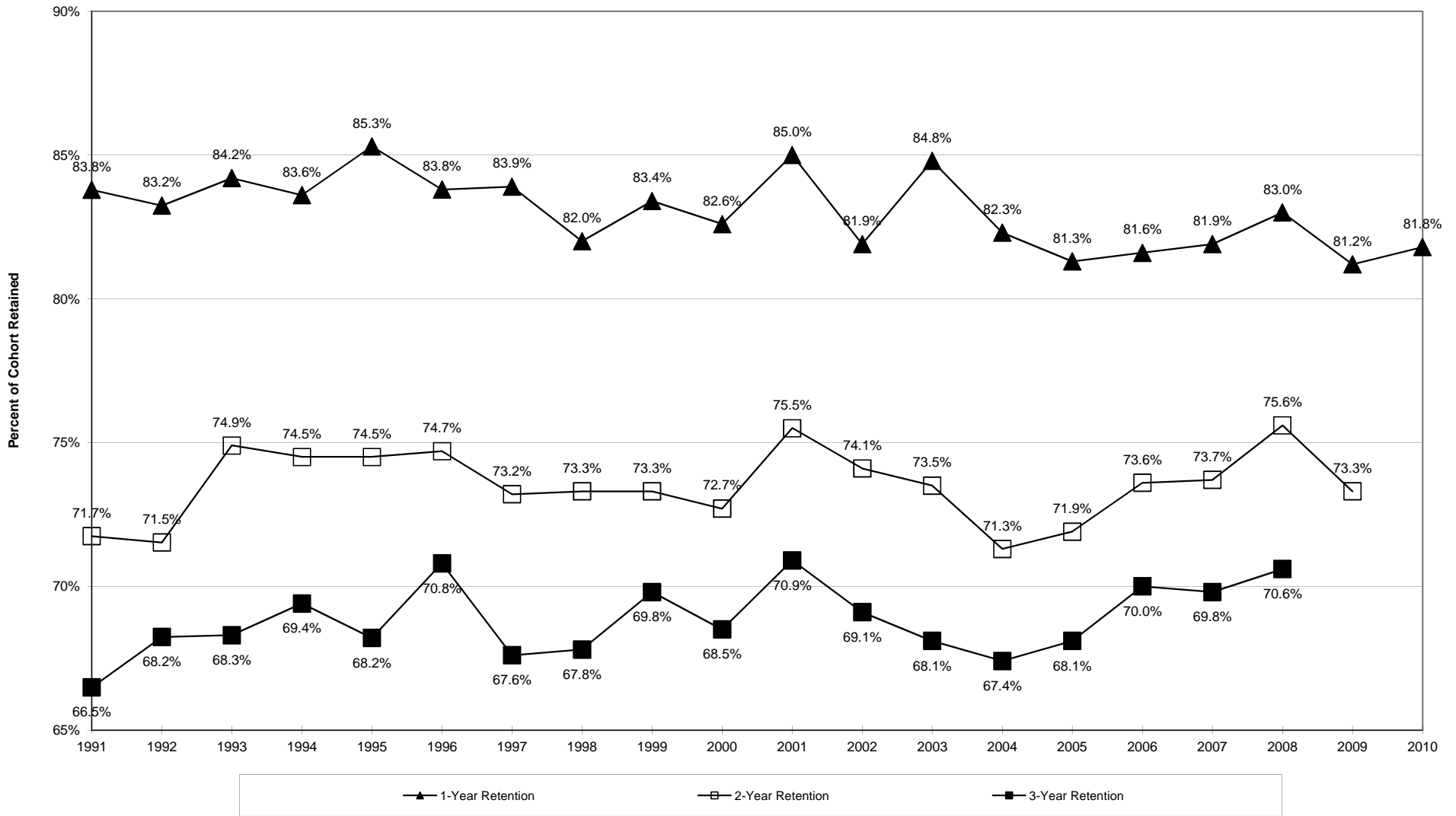


TABLE 7: LONG-TERM TRENDS IN RETENTION AND ATTRITION

Cohort	First Semester Retention	1-Year Retention	2-Year Retention	3-Year Retention	First Semester Attrition	First Year Attrition	Second Year Attrition	Third Year Attrition
1991	No Spring IPEDS Data	83.8%	71.7%	66.5%	No Spring IPEDS Data	16.2%	12.0%	5.3%
1992		83.2%	71.5%	68.2%		16.8%	11.7%	3.3%
1993		84.2%	74.9%	68.3%		15.8%	9.3%	6.6%
1994		83.6%	74.5%	69.4%		16.4%	9.1%	5.1%
1995		85.3%	74.5%	68.2%		14.7%	10.8%	6.3%
1996	94.4%	83.8%	74.7%	70.8%	5.6%	16.2%	9.1%	3.9%
1997	95.1%	83.9%	73.2%	67.6%	4.9%	16.1%	10.7%	5.6%
1998	94.0%	82.0%	73.3%	67.8%	6.0%	18.0%	8.7%	5.5%
1999	95.1%	83.4%	73.3%	69.8%	4.9%	16.6%	10.1%	3.5%
2000	94.6%	82.6%	72.7%	68.5%	5.4%	17.4%	9.9%	4.2%
2001	94.6%	85.0%	75.5%	70.9%	5.4%	15.0%	9.5%	4.6%
2002	94.2%	81.9%	74.1%	69.1%	5.8%	18.1%	7.8%	5.0%
2003	93.5%	84.8%	73.5%	68.1%	6.5%	15.2%	11.3%	5.4%
2004	94.0%	82.3%	71.3%	67.4%	6.0%	17.7%	11.0%	3.9%
2005	94.7%	81.3%	71.9%	68.1%	5.3%	18.7%	9.4%	3.8%
2006	93.4%	81.6%	73.6%	70.0%	6.6%	18.4%	8.0%	3.6%
2007	94.0%	81.9%	73.7%	69.8%	6.0%	18.1%	8.2%	3.9%
2008	94.5%	83.0%	75.6%	70.6%	5.5%	17.0%	7.4%	5.0%
2009	94.4%	81.2%	73.3%		5.6%	18.8%	7.9%	
2010	93.8%	81.8%			6.2%	18.2%		
2011	93.6%				6.4%			
Average	94.2%	83.0%	73.5%	68.8%	5.8%	17.0%	9.6%	4.7%

TABLE 8: 200% GRADUATION RATES

Cohort	Four-year Graduation (100%)	Five-year Graduation (125%)	Six-year Graduation (150%)	Seven-year Graduation (175%)	Eight-year Graduation (200%)	Completed in Seventh Year	Completed in Eighth Year
1998	22.8%	50.0%	56.8%	59.5%	60.7%	2.7%	1.2%
1999	23.4%	50.4%	58.3%	61.5%	62.3%	3.2%	0.8%
2000	26.5%	52.6%	59.3%	61.0%	62.5%	1.7%	1.5%
2001	27.0%	54.0%	61.2%	63.8%	64.8%	2.6%	1.0%
2002	27.8%	54.3%	62.1%	63.9%	64.6%	1.8%	0.6%
2003	29.5%	54.8%	61.8%	63.4%	64.4%	1.6%	1.0%
Average	26.2%	52.7%	59.9%	62.2%	63.2%	2.3%	1.0%

TABLE 10: MEANS COMPARISONS: COMPLETERS VS. NON-COMPLETERS

2005 Entering First-time Cohort Academic Measures	Means			Statistical Significance
	Completers	Non-Completers	Difference	
SAT-Mathematics	540	525	15	***
SAT-Verbal	524	520	4	
SAT-Combined	1064	1045	19	***
High School GPA	3.22	2.94	0.28	***
High School Rank	73	64	9	***

* T-tests: group means; 2-tailed, equal variance assumed, $p \leq 0.05$

** T-tests: group means; 2-tailed, equal variance assumed, $p \leq 0.01$

*** T-tests: group means; 2-tailed, equal variance assumed, $p \leq 0.001$